

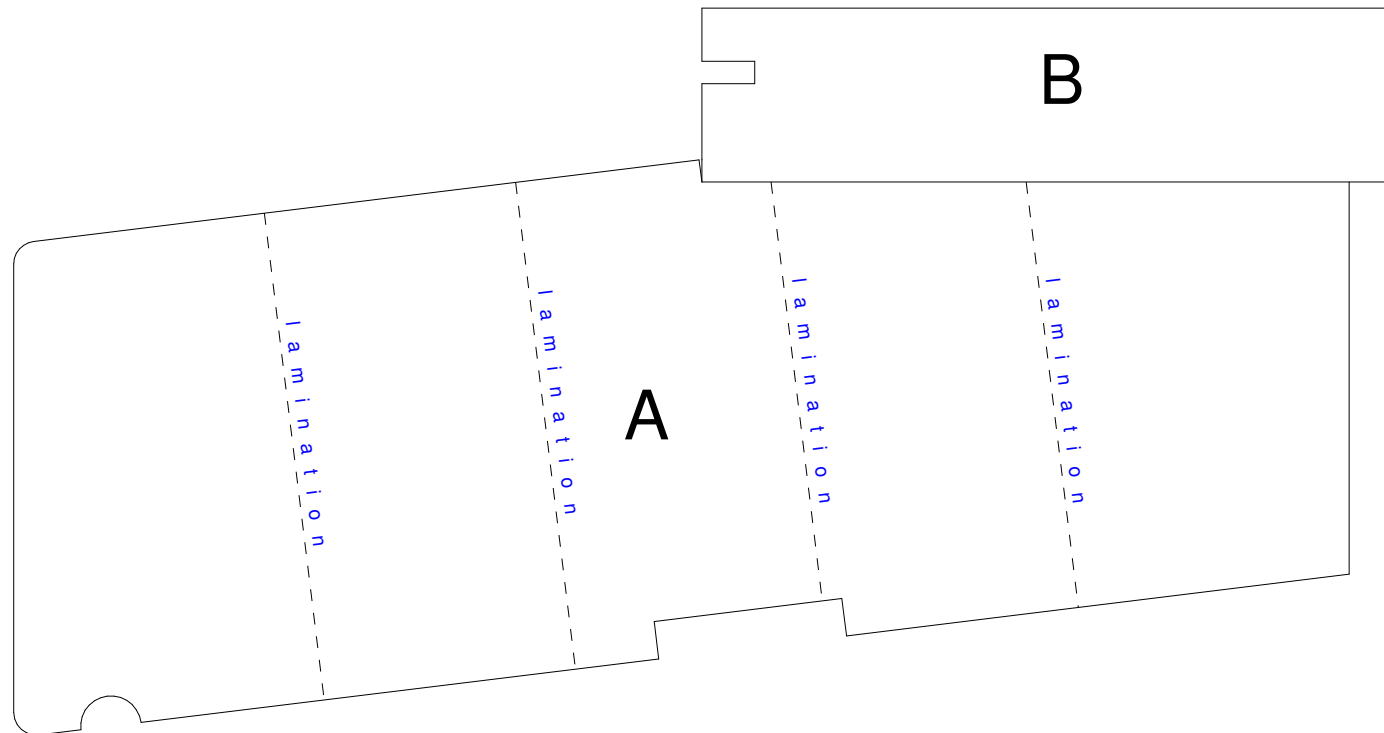
Tunncliffe's

Tunncliffe Timber Company Limited

Profile Drawing

Product	JMF 178 x 65 2-piece Laminated Door Sill
Treatment	H3.2 Tanalised® Ecowood™
Comments	Sill supplied in two separate components, A & B

DS 32



This profile and its dimensions are suitable for use in the JMF New Zealand Ltd system of NZS4211 compliant timber joinery and is available to "NZS4211 affiliated" Master Joiners members only.

To print pdf to scale
Select 'Page Scaling... None'